

LightForce XLi

The new **40W LightForce® XLi** with Empower IQ™ Delivery System is our most powerful laser ever. The increased power directly impacts the time needed to apply a therapeutic dose of light energy, allowing clinicians to decrease the time required to treat effectively. The higher power equips clinicians to treat deeper and faster while covering more tissue area with the new XL Treatment Cone.

The Empower IQ™ Delivery System provides on screen and in hand recommendations to increase the accuracy of treatments. Off and on-contact XL heads allow users to treat large surface areas quickly without jeopardizing patient comfort at higher power settings.

In order to achieve effective treatments and improve dosing accuracy, the XLi assesses the operator's speed and gives real-time visual and sensory feedback. The in depth protocol settings provide recommended parameters on treatment heads and power levels to aid in technician confidence and reduced learning time.



Up to: 40W of therapeutic power

Product Specifications

Laser Type: Class IV, Solid State

Laser Wavelength: 980/810 nm

Laser Power: 0.5W – 40W

Operating Modes: CW or Pulsed

Aiming Beam: 650 nm, 4.5 mW

Dimensions: 17" x 10.5" x 11"
43 cm x 28 cm x 26 cm

Weight: 19.6 lbs. | 9 kg

Description	Item #
LightForce XLi	45863



Quick Disconnect Treatment Heads



XL Rolling Pin



XL Cone



Large Massage Ball



Large Cone



Small Massage Ball



Flat Window



**BEST
PRICED
PRODUCTS**

PO Box 1174, White Plains, NY 10602 (USA)
tel: 1-914-345-3800 / 1-800-824-2939
fax: 1-914-345-0300 / 1-800-356-8587
BPP2.com • govsales@BPP2.com



Woman-Owned Small Business (WOSB)

DUNS: 033960944
CAGE Code: 43RV5
Tax ID: 13-3233962



DANGER – Visible and invisible laser radiation.

Avoid eye or skin exposure to direct or scattered radiation.

Class IV Laser Product
980/810nm, 40W, CW

ver0721

LightForce XPi

The new **25W LightForce® XPi** with Empower IQ™ Delivery System is our most powerful laser ever. The increased power directly impacts the time needed to apply a therapeutic dose of light energy, allowing clinicians to decrease the time required to treat effectively. The higher power equips clinicians to treat deeper and faster.

The Empower IQ™ Delivery System provides on screen and in hand recommendations to increase the accuracy of treatments. Off and on-contact treatment heads allow users to treat surface areas quickly without jeopardizing patient comfort at higher power settings.

In order to achieve effective treatments and improve dosing accuracy, the XPi assesses the operator's speed and gives real-time visual and sensory feedback. The in depth protocol settings provide recommended parameters on treatment heads and power levels to aid in technician confidence and reduced learning time.



Up to: 25W of therapeutic power

Product Specifications

Laser Type: Class IV, Solid State

Laser Wavelength: 980/810 nm

Laser Power: 0.5W – 25W

Operating Modes: CW or Pulsed

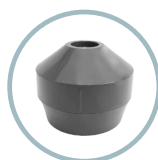
Aiming Beam: 650 nm, 4.5 mW

Dimensions: 17" x 10.5" x 11"

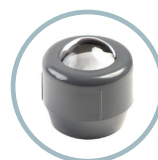
43 cm x 28 cm x 26 cm

Weight: 19.6 lbs. | 9 kg

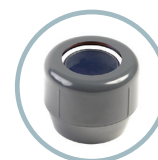
Description	Item #
LightForce XPi	45862



Small Cone



Small Massage Ball



Flat Window



Large Massage Ball



Large Cone



**BEST
PRICED
PRODUCTS**

PO Box 1174, White Plains, NY 10602 (USA)
tel: 1-914-345-3800 / 1-800-824-2939
fax: 1-914-345-0300 / 1-800-356-8587
BPP2.com • govsales@BPP2.com



Woman-Owned Small Business (WOSB)

DUNS: 033960944
CAGE Code: 43RV5
Tax ID: 13-3233962



DANGER – Visible and invisible laser radiation.

Avoid eye or skin exposure to direct or scattered radiation.

Class IV Laser Product
980/810nm, 40W, CW

ver0721